

# INSTALLATION OF GRANULAR STEEL TILES



The first row of tiles at the eaves



Fitting the granular steel tiles



The tiles can be cut with snips or a hacksaw



The ridge tiles and battens viewed from above



Close up view of the ridge tiles and battens



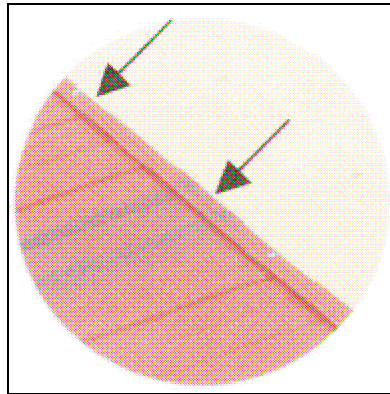
The final ridge cover being fitted



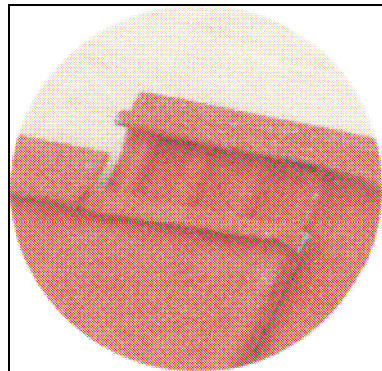
The finished roof

# STEP BY STEP INSTRUCTIONS

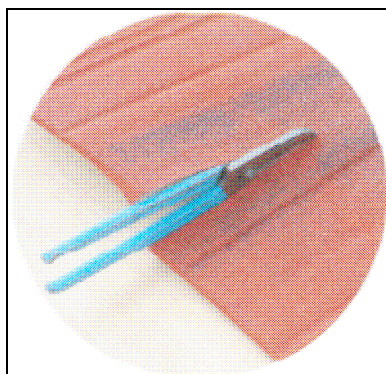
1. Starting in one corner, fix the first tile through the back edge of the tile with 4 evenly spaced screws or clout nails



2. Fix the next tiles with the correct overlap at the sides



3. Cut the tiles flush with the edge of the roof boards at each side of the roof, using a jigsaw or snips.

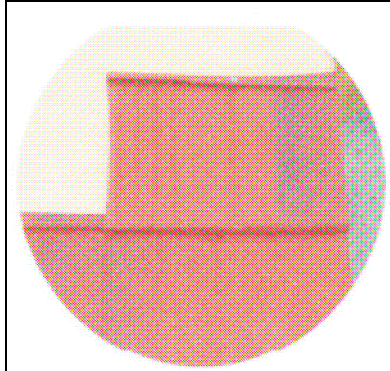


Summer Garden Buildings, Bluebell Road, Norwich, Norfolk, NR4 7LG.

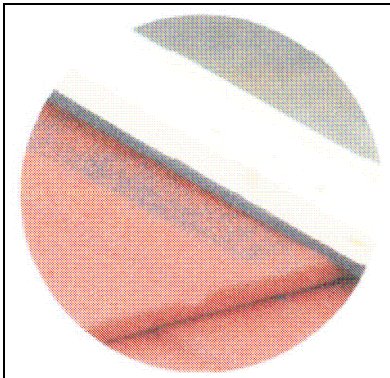
Phone 01603 510150

See our summerhouses, greenhouses, garden sheds and log cabins at  
[www.summergardenbuildings.co.uk](http://www.summergardenbuildings.co.uk)

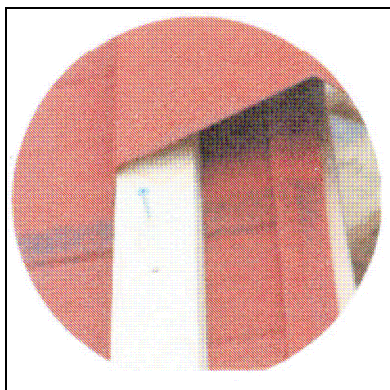
4. Use the offcut to start the next row and continue with subsequent rows up to the ridge. The highest row of tiles at the ridge should be cut as required using the apex of the ridge as the cutting line.



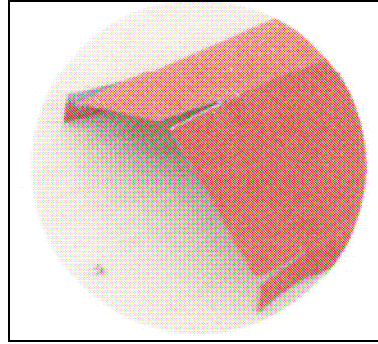
5. Place the L shaped barge board arrangement over the edges of the tiles at each side and fix in place with 45mm screws.



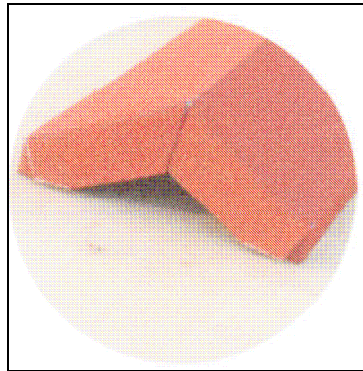
6. Using the ridge cover as a guide, position 50mm x 25mm battens to each side of the ridge and fix using 45mm screws or galvanized nails.



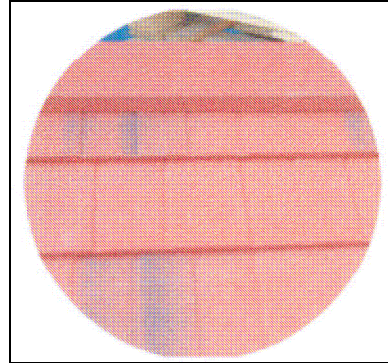
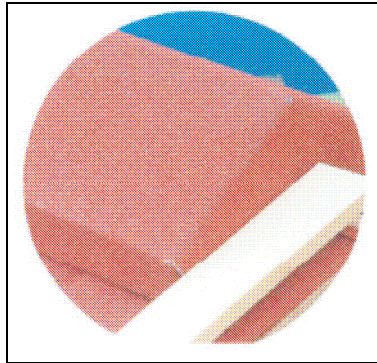
7. Cut the end ridge covers as shown below



8. Fold in the 2 small side tabs then fold over the 2 large tabs to close the ridge. A stamp on the underside of the ridge caps shows the wide end for overlapping.



9. Fix the ridge caps down into the ridge battens using screws or galvanised nails, with an 80mm overlap at each join.



10. Finish the exposed screw or nail heads using the repair kit supplied. Apply the minimum amount of acrylic required to cover and seal the heads then sprinkle with granules.



Summer Garden Buildings, Bluebell Road, Norwich, Norfolk, NR4 7LG.

Phone 01603 510150

See our summerhouses, greenhouses, garden sheds and log cabins at  
[www.summergardenbuildings.co.uk](http://www.summergardenbuildings.co.uk)